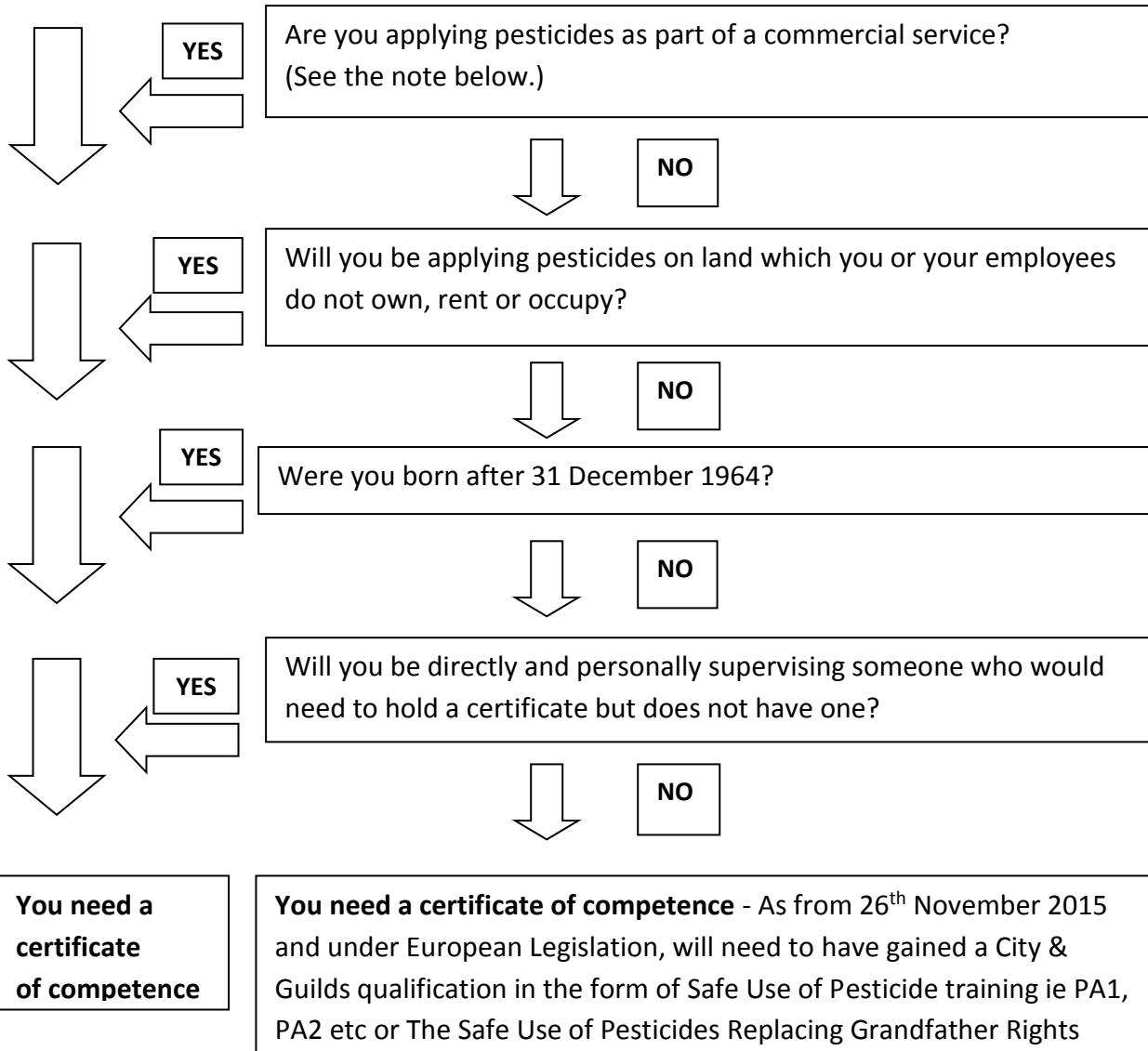


Do you require a Spray Application certificate of competence?



Note: You are supplying a commercial service if:

- The crops, land, produce, materials, buildings or the contents of buildings you are treating are not owned, occupied, rented by you or your employer; or
- You are applying a pesticide to seed that will be used on land not owned, occupied or rented by you or your employer, even if the pesticide is provided by the land owner