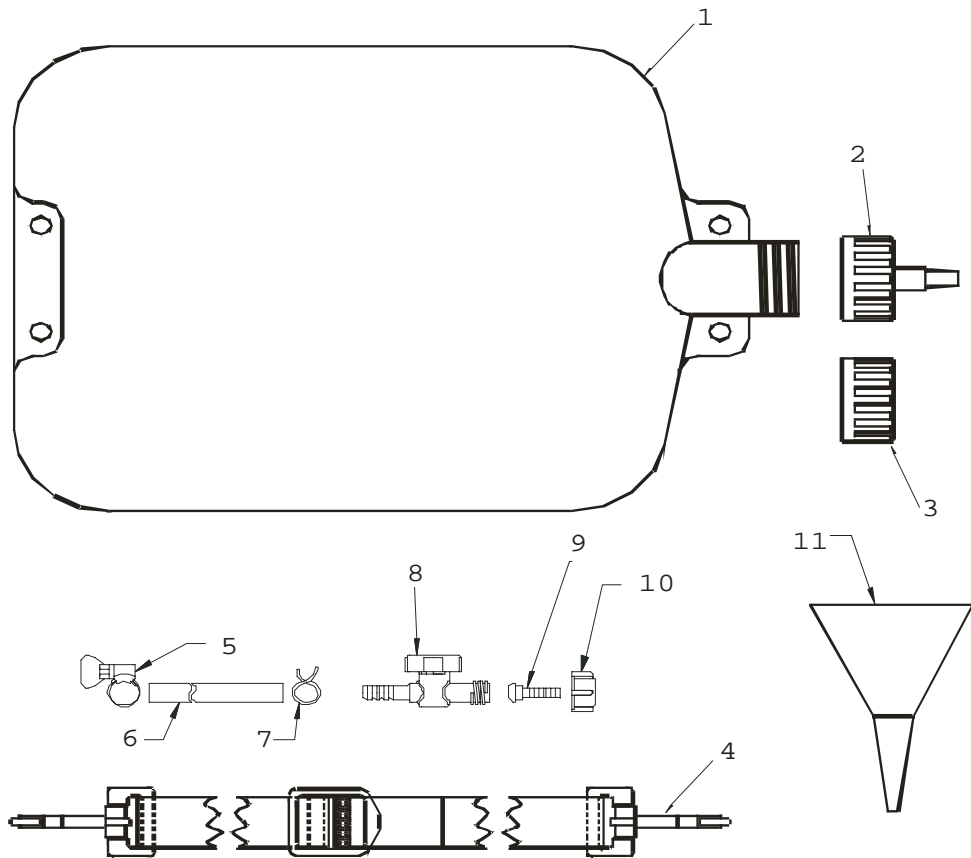


**INJECTORDOS BACKPACK AND REFILLING SYSTEM PARTS AND DIAGRAM**

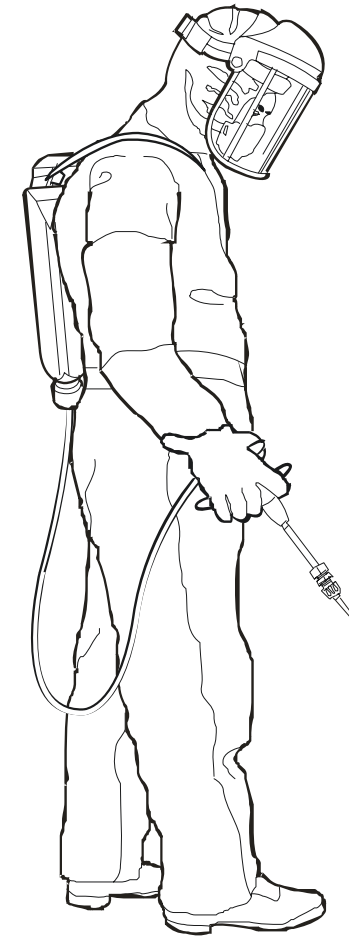
1	Backpack, 1.0 litre, collapsible	6071	1
2	Connector, 7.5 & 10 mm, 38mm, backpack	6073	1
3	Cap, 38mm, backpack	6074	1
4	Strap, shoulder c/w closed loops	6075	1
5	Hose clip, No.12, wingscrew	5464	1
6	Tube, PVC, 8mm id x 12mm od - 0.9m	5414/90	1
7	Clip, Hose Wire 11.9mm	6029	1
8	Tap, in-line	5776A	1
9	Hose Connector 6mm	5778	1
10	Union Nut	5779	1
11	Funnel	5843	1



**INJECTORDOS**

# INJECTORDOS

## Instruction Manual



**micron**  
 Bromyard Industrial Estate, Bromyard,  
 Herefordshire, HR7 4HS, UK  
 Tel: + 44 (0) 1885 482397  
 Fax: + 44 (0) 1885 483043  
 E-mail: [micron@micron.co.uk](mailto:micron@micron.co.uk)  
 URL: <http://www.micron.co.uk>

**CONTENTS**

**Page**

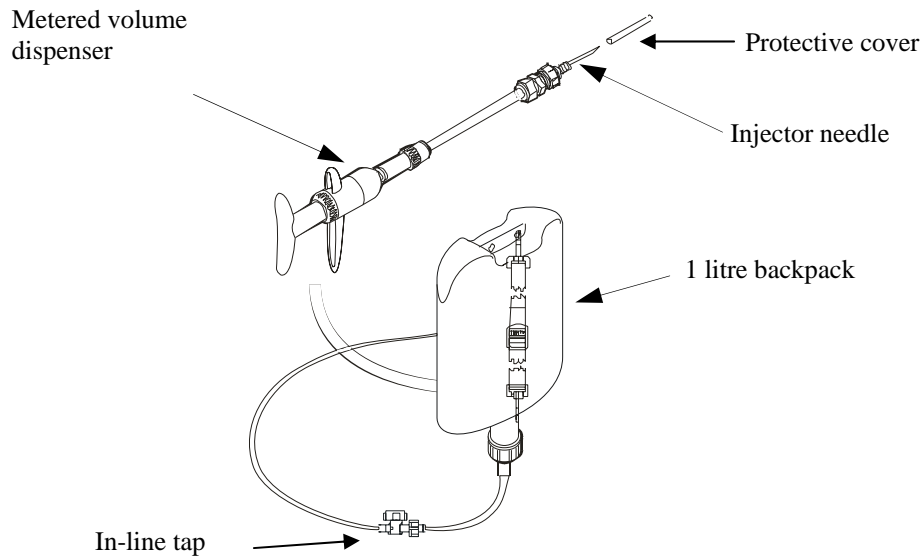
Description..... 1  
 Safety ..... 2  
 Operator protection ..... 2  
 Mixing and filling ..... 2  
 Preparation of InjectorDos ..... 3  
 Example of Injecting..... 4  
 Cleaning and maintenance ..... 5  
 InjectorDos metered volume dispenser and injector needle parts list / diagram..... 6  
 InjectorDos backpack and refilling system parts list / diagram..... 7

**DESCRIPTION**

The InjectorDos is a hand held injection applicator with the facility to ‘dial-in’ a pre-determined metered volume of liquid to be dispensed. The InjectorDos is suitable for injecting herbicide into weeds with hollow stems e.g. Japanese Knotweed (*Fallopia Japonica*), Giant Hogweed (*Heracleum Mantegazzianum*) and Himalayan Balsam (*Impatiens Glandulifera*).

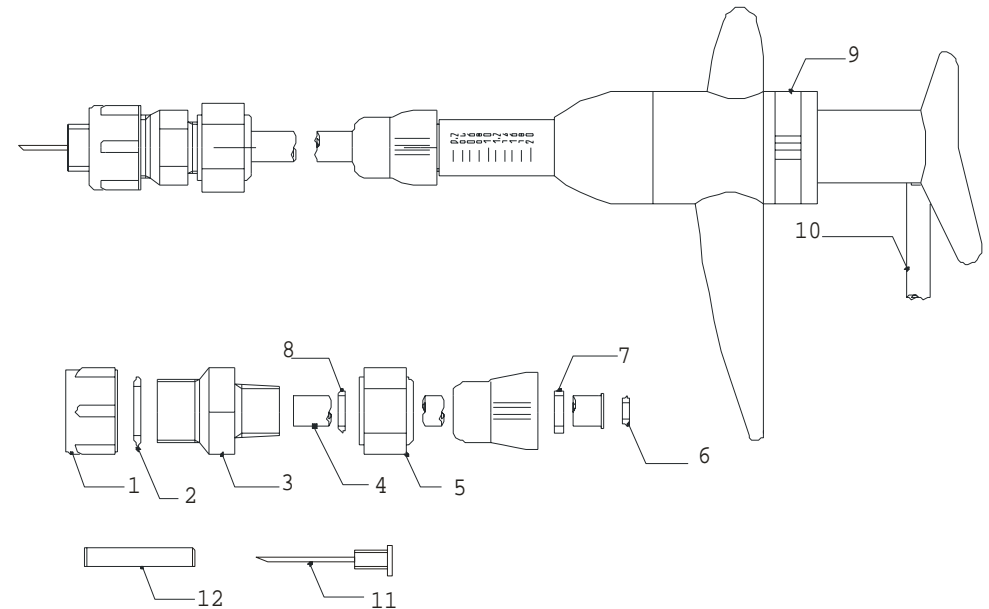
The InjectorDos offers a safe and effective means of treating weeds in or next to sensitive areas (e.g. close to waterways) or where adjacent foliage needs to be preserved and a spray is unsuitable.

The InjectorDos comes with a one litre collapsible backpack to replenish the applicator via a length of hose. Liquid supply can be shut off using an in-line tap which allows for disconnection/isolation of the backpack from the applicator.



**INJECTORDOS METERED VOLUME DISPENSER AND INJECTOR NEEDLE PARTS LIST AND DIAGRAM**

Item No.	Description	Part No.	Qty.
1	Nut, union, 11/16" UNF P.P., Natural	5791	1
2	O-ring, B111 viton	5057	1
3	Nozzle body, 11/16" UNF - 1/4"	5792	1
4	Lance, 5/16" od x 16SWG - 0.075m aluminium	7432	1
5	Nut, Union, 1/4" BSP taper P.P., Natural	5793	1
6	O-ring BS007, viton	5058	1
7	Spacer, 11mm od x 8.3mm id	5801	1
8	O-ring, BS011, viton	5151	1
9	Syringe applicator, 2ml	7194	1
10	Tube, PVC, 5mm id x 8mm od - 0.5m	4309/50	1
11	Injector needle	4871F	1
12	Tube, PVC, 8mm id x 12mm od - 0.060m	5414/060	1



## CLEANING AND MAINTENANCE

Disconnect the injection applicator from the backpack. Open the in-line tap and drain chemical back into the backpack. Store backpack with filling cap uppermost.



Empty any chemical residue back into chemical container (if using undiluted products).



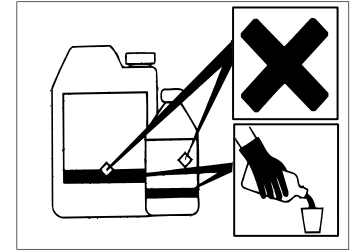
NOTE. If storing for a prolonged period flush the injection applicator through with clean water. Always follow instructions on the label.

## SAFETY

Using agrochemicals is a hazardous process. Operators should comply with all relevant legislation and/or regulations governing the use of agrochemicals and should use appropriate personal protective equipment (P.P.E.) see 'OPERATOR PROTECTION'.

**Always** read the product label carefully to discover:-

- ◆ approved applications
- ◆ operator protection required
- ◆ necessary environmental protection measures



**Never** eat, drink, or smoke when working with agrochemicals. After using agrochemicals or handling equipment wash your hands thoroughly. Keep people (especially children) and animals out of areas being treated.

**Always** store agrochemicals safely to protect people and animals, and to safeguard the environment (take special care to avoid water pollution).

## OPERATOR PROTECTION

- ◆ Wear suitable protective gloves when handling the concentrate and when handling contaminated surfaces.
- ◆ Wear suitable protective clothing (Coveralls), suitable protective gloves, rubber boots and face protection (Face shield) when using stem injection equipment.

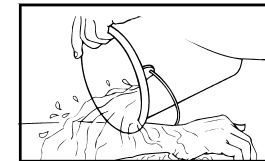


## MIXING AND FILLING (GENERAL)

Mixing and filling is generally the most hazardous process in the application operation.



**Always** wear gloves when handling agrochemicals and equipment.



**Always** wash off any skin contamination



**Always** clean all equipment after use.

## PREPARATION OF INJECTORDOS

Fill the backpack with chemical, generally undiluted product containing 360gl glyphosate e.g. Roundup™.



Connect the injection applicator and ensure that outside of the backpack is clean.



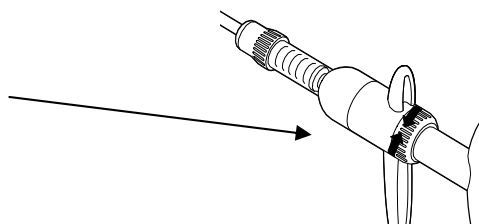
Prepare for injection



Remove protective cover from the injector needle.



Turn the dial on the metered volume dispenser to read the desired injection dose, generally 2 ml.



## PREPARATION OF INJECTORDOS (CONT).

Prime the system by opening the in-line tap then operate the trigger mechanism on the metered volume dispenser several times until all the air has been expelled from the syringe chamber and feed tube, holding the needle in the chemical container (if using undiluted products).



## EXAMPLE OF INJECTING

When injecting, push the needle fully into the stem so that the 2 cross holes are inside the stem. For example when injecting Japanese Knotweed (*Fallopia Japonica*) injection should take place just below the first or second node, generally using a one shot dose of 2ml of undiluted glyphosate.

