



**Dedicate<sup>te</sup>**<sup>®</sup>

**Trust in,**

*the power of prevention*



//// Your success, our science



**Dedicate®** is a highly effective contact and systemic turf fungicide. It is rapid acting on a broad spectrum of diseases, long lasting and can be used throughout the year.



## Key features and benefits

Dedicate® is a broad spectrum contact and systemic turf fungicide, containing 200g/lit (18.2% w/w) tebuconazole and 100g/lit (9.10% w/w) trifloxystrobin.

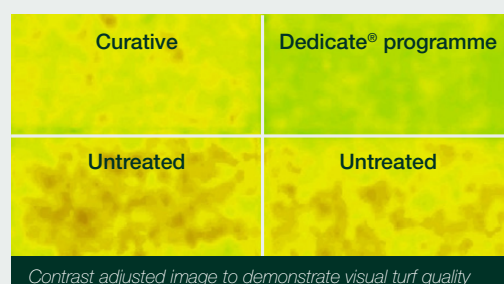
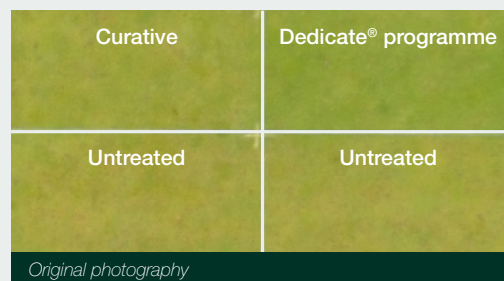
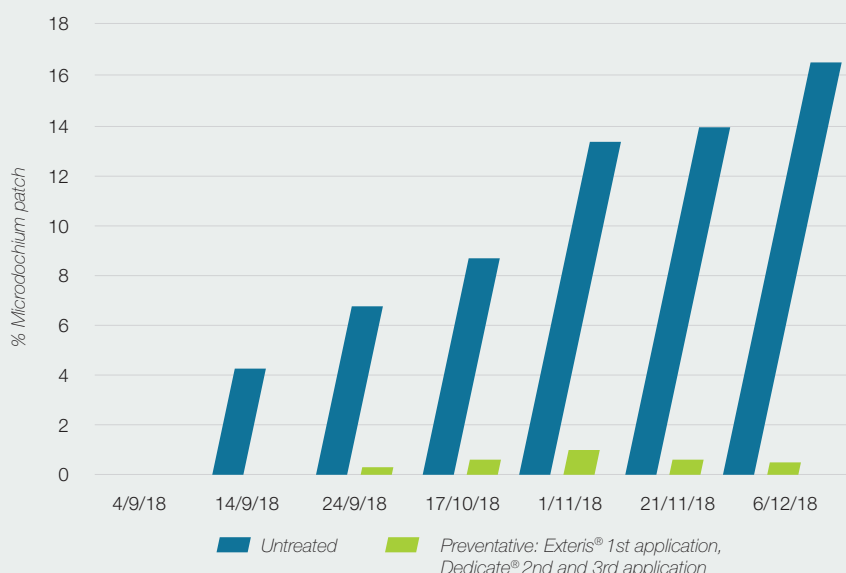
- // **Preventative and early curative disease control**
- // **Diseases controlled:** Microdochium Patch, Anthracnose, Dollar Spot, Leaf Spot, Red Thread and Rust
- // **Rapid-acting** – proven results within two weeks of application
- // **Contact and systemic turf fungicide**
- // **Superior penetration** – dual action protects your turf inside and out
- // **Containing two fungicide groups** – minimise resistance risk
- // **Can be applied all year round** – with up to 4 applications a year
- // **Low dose** – 1 Litre treats 1 hectare

Application rate	Water rate
1L / hectare	400-500L / hectare



## The power of prevention

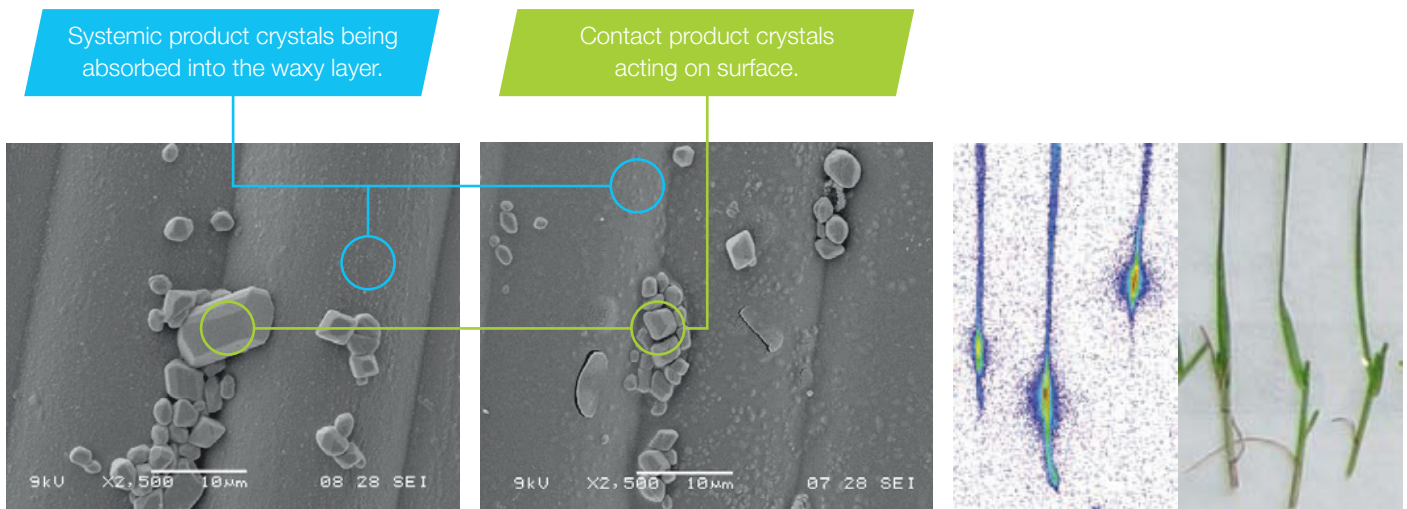
Over 2 seasons (2017 to 2019) Bayer Turf Solutions undertook extensive independent trials based at the STRI. These season long trials were undertaken to illustrate the significant benefits of employing preventative Microdochium Patch control programmes vs curative controls. Dedicate was a key foundational product as part of the preventative programme during the peak season of pressure (Oct–Nov). The trials provided clear evidence of improved plant health, consistency and satisfaction.





## Fast acting absorption

Dedicate® has been proven to be fast acting. Once the spray application has dried on the leaf surface, rainfall will not interfere with its ability to control disease, due to combined contact action and systemic properties.

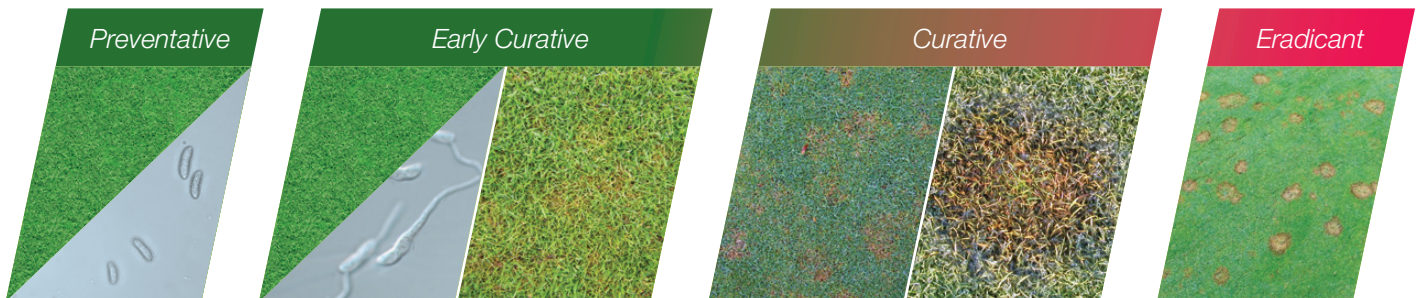


Product on leaf surface before and after a heavy rain shower (30 minutes after application)

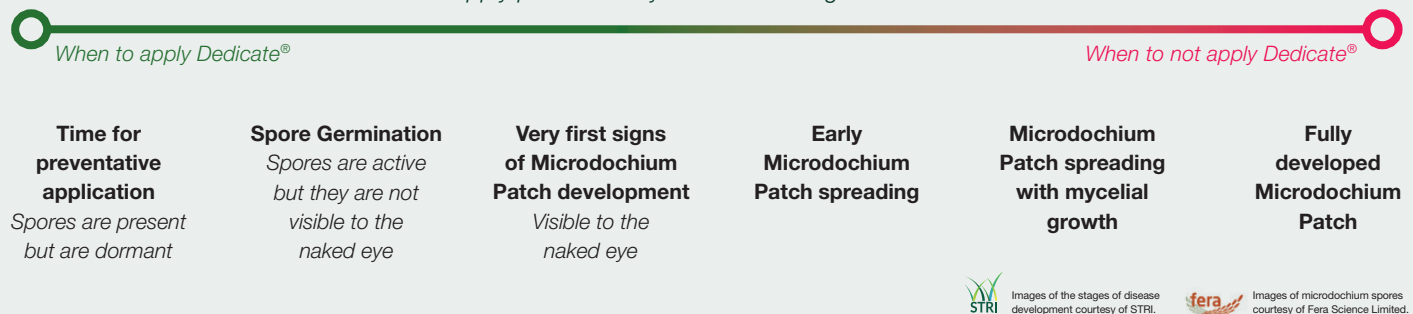
Radio-labeling: Showing excellent systemic activity of Dedicate® in the leaf blade after 1 hour of constant rain

## Microdochium Patch control

During autumn the turf grass is exposed to a number of unique stresses which, if unmanaged, will create the perfect environment for Microdochium Patch to thrive. To maximise product performance and disease control efficacy, timing of application is key.



For best results apply preventatively or at the first signs of Microdochium Patch.



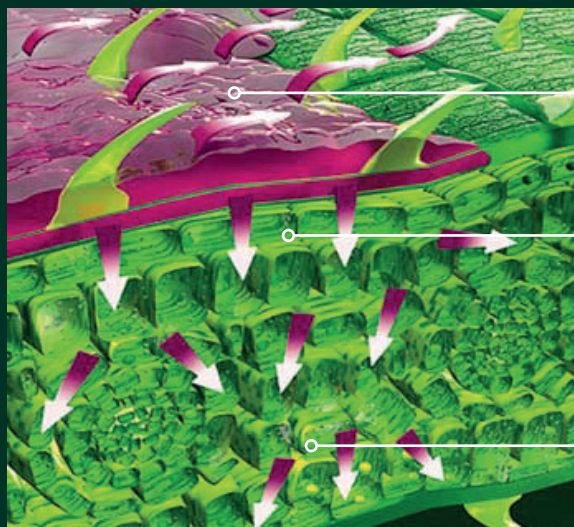
Images of the stages of disease development courtesy of STRI.



Images of microdochium spores courtesy of Fera Science Limited.

## Fungicide that works both inside and out

Dedicate's® dual action protects your turf inside and out. The enhanced formulation has a unique "additive system" which provides improved contact action, increased weather durability and superior penetration and uptake to give fast control.



Strong activity on the plant surface.

Re-distribution of the product occurs at the plant surface. The active components are absorbed by the waxy layer (which enhances rainfastness) and then penetration occurs into the plant tissue (translaminar movement).

Systemic activity throughout turf plant.

## Control against 6 key turf diseases

Dedicate is a preventative and early curative disease control and can be used on a broad spectrum of diseases.

	Microdochium patch	Red thread	Dollar spot	Anthracnose	Leaf spot	Rust
<b>Control</b>	✓	✓	✓		✓	
<b>Moderate</b>						
<b>Reduction</b>				✓		✓



**Bayer**

Science for a **better life**

Bayer Crop Science Ltd  
230 Cambridge Science Park  
Milton Road, Cambridge CB4 0WB  
Tel: 00800 1214 9451  
Email: turfsolutions@bayer.com

[www.es.bayer.co.uk](http://www.es.bayer.co.uk)



@BayerAmenityUK



All information was deemed correct at time of print. Published August 2020. © Bayer Crop Science Ltd. Dedicate® contains 200 g/L Tebuconazole and 100 g/L Trifloxystrobin. MAPP Number 17003. Use plant protection products safely, always read the label and product information before use. Pay attention to the risk indications and follow the safety precautions on the label. Dedicate® is a trademark of Bayer.